

4K ALL-ONE

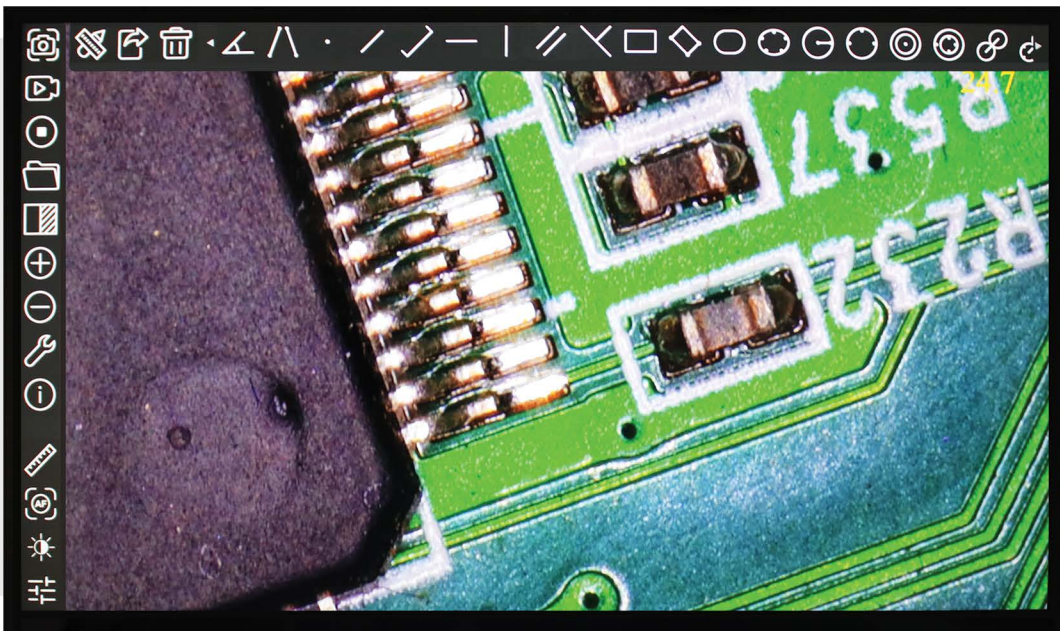
**Digital Camera NOW with Touchscreen
& Integrated Software**



INTRODUCING THE SCIENSCOPE 4K ALL-ONE CAMERA: A COMPLETE INSPECTION SOLUTION

Upgrade your inspection process with the Scienscope 4K All-One Camera—a versatile, complete solution for transforming any optical microscope into a powerful digital inspection tool. Now available with an optional 13.3" touchscreen, this model provides intuitive, direct control over all functions, allowing for a seamless, hands-on inspection experience without the need for an external computer.

The 4K All-One (AO) camera offers advanced, software-controlled optics, onboard image processing, and capture capabilities, delivering crisp, true 4K image quality with zero delay. This complete system includes built-in measurement tools with an on-screen magnification display, integrated LED lighting, a universal mounting adapter, and an easily accessible touchscreen interface that streamlines operation.



Integrated Software Features

- Live measurement & annotation
- Capture media to SD card/USB
- Split-screen image comparison
- Media gallery / Visual Review
- Export measurement data
- Wireless mouse control

4K CMOS HDMI™ USB SD

4K ALL-ONE

Digital Camera with Touchscreen & Integrated Software

With the touchscreen model, users gain even greater control, enabling precise adjustments and measurements with a tap. Perform quick measurements using field-of-view tools displayed in real-time on the 13.3" screen. Export measurement data and annotated images seamlessly, empowering you to inspect, document, and analyze efficiently and accurately.



The All-in-One Touchscreen camera offers tilting capabilities for an ergonomic workspace, adjustable from 90° upright to 60° downward. This flexibility ensures maximum comfort during inspections, reducing strain and improving workflow

KEY FEATURES

- 4K
- 13.3-inch Active Area
- IPS LCD Panel with a 178° Wide Viewing Angle
- HDR Dynamic Image Enhancement
- 400 cd/m² Display Brightness, with a high contrast ratio of 1000:1
- 4mm Narrow Frame Design for an immersive visual experience
- Onboard Measurement Tools and DXF Overlay for precision

CAMERA

Specification	Details	Specification	Details
Sensor	Sony IMX415LQR-C	Field of View @ 20X	10mm x 5.6mm
Pixel Size	1.45µm x 1.45µm	Lighting	8 CREE XP-E2 LEDs @ 137 lumens each
G Sensitivity & Dark Signal	300mv/0.13 with 1/30s exposure	Lighting Color	White
FPS / Resolution	30 FPS @ 3840 x 2160 (HDMI)	Power	3V / 3A
Binning	1x1	LED Ring Light Inner Diameter	50mm
Exposure Range	0.04ms to 1000ms	LED Ring Light Outer Diameter	76mm
Zoom Range	0.028X to 0.56X	Mounting Adapter	76mm diameter adapter bracket, ¼" 20 mounting thread
Working Distance	156mm - 195mm	Camera Sensor	Sony 1/2.8" 4K Starvis CMOS
MTF (Modulation Transfer Function)	160 lp/mm	Resolution	4K/1080P @ 30FPS, auto-switching according to monitor resolution
Distortion	0.5%	Storage	Supports SD card/USB flash drive for image and video storage, with local preview and playback
Field of View @ 1.0X	200mm x 112.5mm	Video Output	4K HDMI/USB/ETH/WiFi (multiple video output options)

TOUCHSCREEN MONITOR

Specification	Details	Specification	Details
Control	Touchscreen control panel, measurement toolbar, comprehensive control toolbar, autofocus, zoom control	Native Resolution	1920 x 1080
On-Screen Display	Onscreen magnification display	Display Type	16:9 Ratio, 13.3 Inch
Tilting Capabilities	Adjustable from 90° upright to 65° downward	Typical Contrast Ratio	1000:1
Input Video Format	HDMI	Colors	16.7 Million